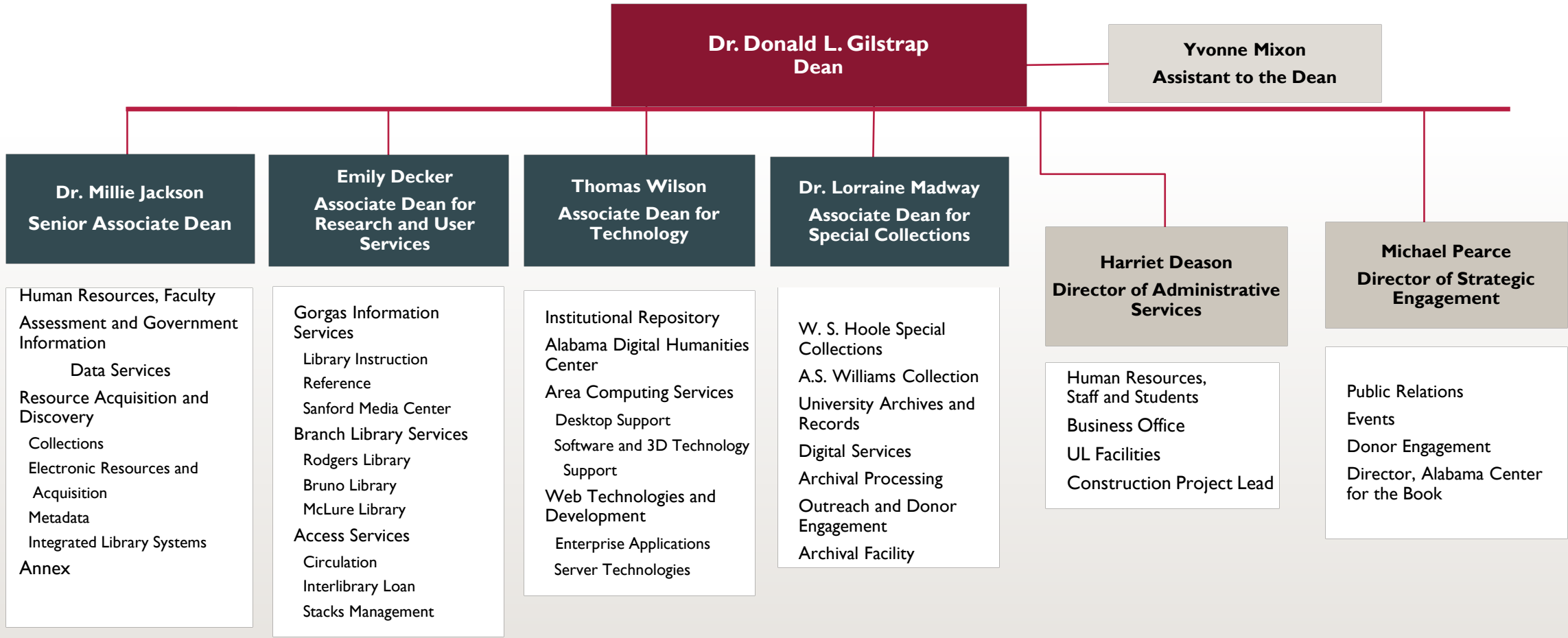


# UNIVERSITY LIBRARIES ORGANIZATIONAL CHART

## JANUARY 2020



**Dr. Donald L. Gilstrap**  
Dean

**Yvonne Mixon**  
Assistant to the Dean

**Dr. Millie Jackson**  
Senior Associate Dean

Human Resources, Faculty  
Assessment and Government  
Information  
Data Services  
Resource Acquisition and  
Discovery  
Collections  
Electronic Resources and  
Acquisition  
Metadata  
Integrated Library Systems  
Annex

**Emily Decker**  
Associate Dean for  
Research and User  
Services

Gorgas Information  
Services  
Library Instruction  
Reference  
Sanford Media Center  
Branch Library Services  
Rodgers Library  
Bruno Library  
McLure Library  
Access Services  
Circulation  
Interlibrary Loan  
Stacks Management

**Thomas Wilson**  
Associate Dean for  
Technology

Institutional Repository  
Alabama Digital Humanities  
Center  
Area Computing Services  
Desktop Support  
Software and 3D Technology  
Support  
Web Technologies and  
Development  
Enterprise Applications  
Server Technologies

**Dr. Lorraine Madway**  
Associate Dean for  
Special Collections

W. S. Hoole Special  
Collections  
A.S. Williams Collection  
University Archives and  
Records  
Digital Services  
Archival Processing  
Outreach and Donor  
Engagement  
Archival Facility

**Harriet Deason**  
Director of Administrative  
Services

Human Resources,  
Staff and Students  
Business Office  
UL Facilities  
Construction Project Lead

**Michael Pearce**  
Director of Strategic  
Engagement

Public Relations  
Events  
Donor Engagement  
Director, Alabama Center  
for the Book